

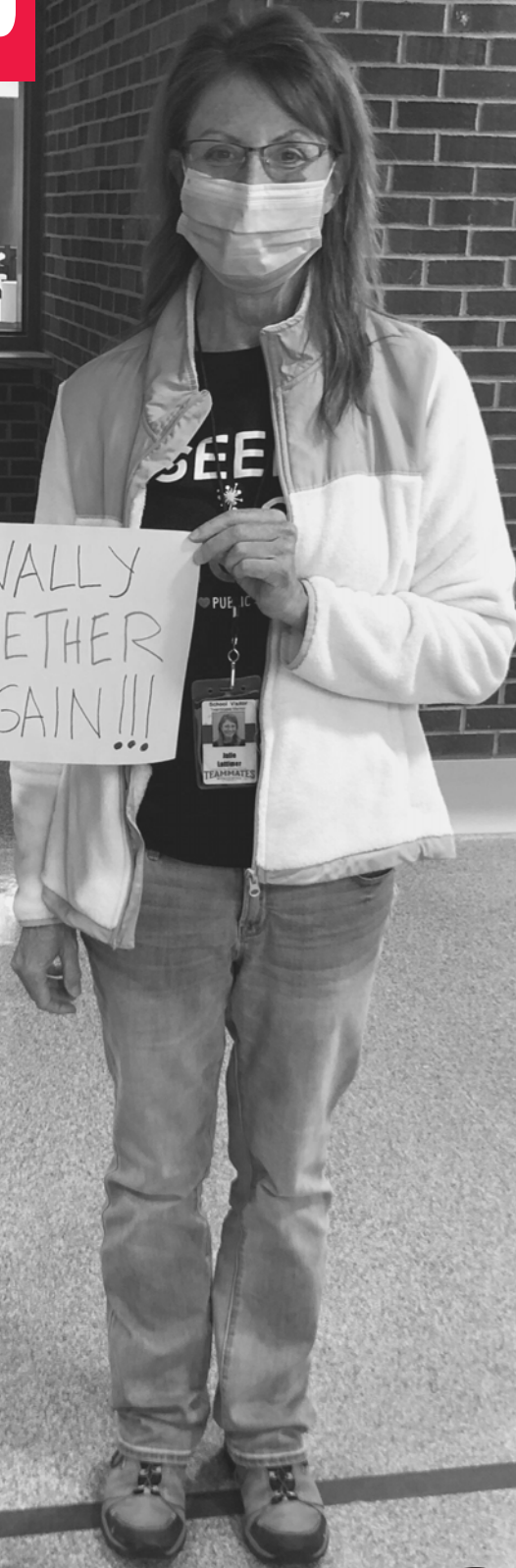
TEAMMATESSM

MENTORING

ANNUAL REPORT
2019-2020



FINALLY
TOGETHER
AGAIN!!!



BE THERE
NO MATTER WHAT.

OUR MISSION IS TO POSITIVELY IMPACT THE WORLD BY INSPIRING YOUTH TO REACH THEIR FULL POTENTIAL THROUGH MENTORING.

A LETTER FROM OUR CO-FOUNDERS:

THANK YOU FOR BEING ON OUR TEAM

Dear Friends,

Nancy and I want to thank all of you for your support of TeamMates. This past year has been a very difficult year for all of us and this is particularly true for our young people. Normal routines involving school, sports, social gatherings and families have been disrupted. This has led to many young people feeling isolated and depressed. There is a greater need for mentors who can offer consistent support, guidance and love to young people who are hurting.

Our TeamMates staff has had to work especially hard to find innovative ways to continue our mentoring efforts with the closure of schools and so many classes being conducted online. Virtual mentoring may be a blessing in disguise as it will enable mentors to stay in touch with mentees during vacation periods and times when illness or travel interrupts normal face-to-face mentoring.

We continue to gather extensive data on our matches and see consistent improvement. Here is a look at how our mentees have excelled on average over the last five years:

55%

of mentees showed academic improvement.

86%

of mentees showed fewer unexcused absences.

74%

of mentees showed fewer disciplinary referrals.

Thank you again for your amazing support. TeamMates would not exist without friends like you.

Tom and Nancy Osborne
TeamMates Mentoring Co-Founders

Tom Osborne

Nancy Osborne



FROM THE TEAMMATES' EXECUTIVE DIRECTOR:

STEPPING UP OUR COMMITMENT TO YOUTH

As a school-based mentoring program, TeamMates has been significantly impacted by COVID-19. When schools shut down in the spring, match meetings stopped abruptly. To keep mentors and mentees connected, we quickly developed the TeamMates Match Message Center, which provides a secure means of sending messages between a mentor and mentee. We also tested procedures for holding virtual match meetings with some local TeamMates programs.

Over the summer, when TeamMates mentors and mentees typically take a break, we worked diligently to develop the TeamMates Portal, a safe and secure online meeting platform. While meeting in person is our preference, with the rise in COVID-19 cases across the Midwest, the TeamMates Portal is becoming an even more important tool for maintaining critical connections.

Now, maybe more than ever, young people need the support and encouragement of a mentor. Feelings of isolation and loneliness are on the rise, which can lead to serious physical and mental health issues. Connecting with others, even by video, has been shown to mitigate the negative effects of social isolation. Seeing matches meeting again in person and through the TeamMates Portal, is inspiring and heartwarming. We know we are making a difference when we see their faces light up, and we see it in the incredible results year after year, in the classroom and beyond.

We graduated our largest class of high school students in May, with 728 high school graduates and a 96% on-time graduation rate. We are grateful for our generous donors, community partners and post-secondary institutions across the Midwest who make it possible for TeamMates mentees to receive nearly 150 scholarships that total over \$3 million annually.

I am also grateful for the incredible effort by the TeamMates staff, school district staff and local leaders who have worked tirelessly to support TeamMates matches during this very challenging time. We are still working through obstacles and may feel the impact of the pandemic for years to come. Through the fear of the unknown and the pain of seeing so many suffer from the impact of COVID-19, we also see hope and inspiration in the passion and commitment to TeamMates mentees.

This past year, nearly 11 thousand TeamMates mentors in over 180 communities across 5 states positively impacted the world by inspiring youth to reach their full potential through mentoring. We are proud of every TeamMates mentor and their incredible commitment to Be There for their mentee, no matter what.



Sarah Waldman
TeamMates Mentoring Executive Director

THIS IS WHAT HAPPENS WHEN WE CONTINUE TO BE THERE

10,949

STUDENTS SERVED IN 2019-2020

91%

of TeamMates mentees report higher levels of **HOPE** as a result of their mentor.

97%

of TeamMates mentees say they **TRUST** their mentor.

83%

of mentors report feeling more **ENGAGED** at home or at work as a result of their mentoring time.

95%

of mentees are **PROUD** to be in TeamMates.



180+

LOCAL PROGRAMS



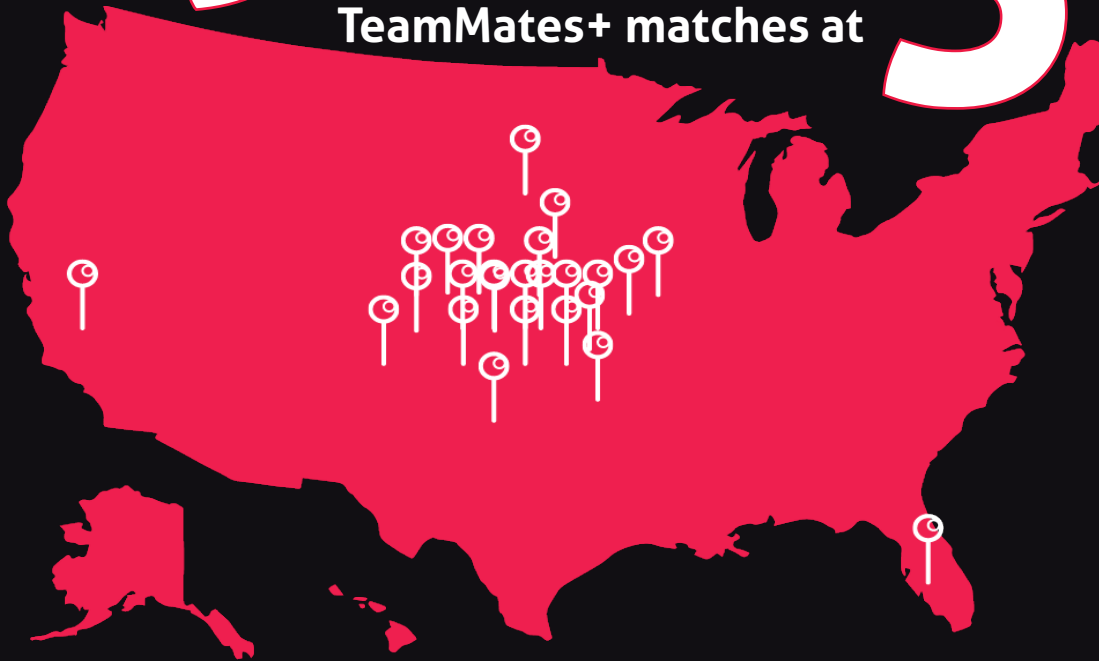
**SUCCESS FOR COLLEGE STUDENTS
THROUGH MENTORING.**

292

TeamMates+ matches at

39

colleges.



82%

of TeamMates+ mentees continue onto their second year of college. This is compared to the National Average of 70%.

"I learned that I am capable of anything I set my mind to."



12th grade mentee

In 2020, TeamMates and our post-secondary partners awarded

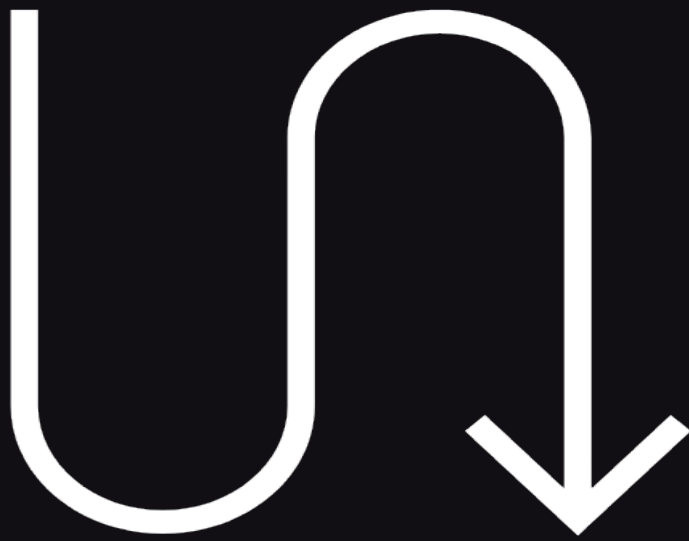
\$3,000,000+

in scholarships to mentees.

WHEN SCHOOLS SHUT DOWN DUE TO COVID-19 IN MARCH 2020, TEAMMATES CREATED THE ONLINE MATCH MESSAGE CENTER. MATCHES WERE ABLE TO SEND VIRTUAL NOTES TO EACH OTHER WHILE STILL FOLLOWING TEAMMATES' SAFETY MODEL AND BEST PRACTICES.

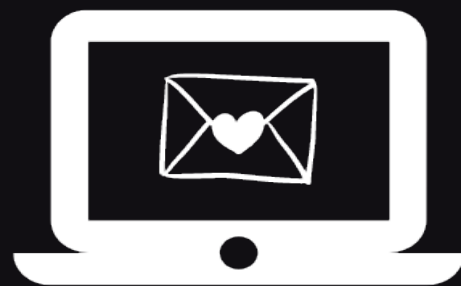


2,400 MATCHES
SENT MESSAGES VIRTUALLY.



5,560+ MESSAGES

SENT BETWEEN MENTORS AND MENTEES.



MANY PROGRAM COORDINATORS ALSO HELPED TO EXCHANGE MESSAGES LOCALLY.

STAYING CONNECTED.



During the spring of 2020, schools closed due to the outbreak of COVID-19, which abruptly, and unexpectedly, prevented TeamMates mentors and mentees from meeting in person. Many programs paused during this time to help support their communities and keep students and mentors safe.

When school is in session, school employees and mentors are often the only adults checking in on the safety and well-being of children in vulnerable situations. TeamMates believed it was critical that TeamMates mentors find a way to maintain communication with mentees to ensure that there was a touchpoint for all TeamMates youth.

In Fall of 2020, students and mentors who were unable to meet at school in person, were given access to the TeamMates Portal, a virtual meeting platform. This new system is being implemented, in part, through funding secured from Nebraska's CARES Act recovery grants for nonprofits.

"I was finally able to see my mentee after 10 long months through the TeamMates Portal," Mentor Julie di Minico said. "I missed her so much, and we picked up our mentorship like we just talked last week!"

THIS IS HOW IT WORKS:



Mentors and mentees can access the TeamMates Portal with a personal username and password, which provides the ability to schedule and attend weekly Zoom meetings with each other. Students use a school-issued device to meet with their mentor and the meeting is monitored to ensure safety for both mentor and mentee. The TeamMates training team is consistently providing activities and resources to help mentors and mentees engage in conversation as they navigate this "new normal".

"I had 3 mentors come to my house at lunchtime with their phones/laptops/tablets and Cindy had their mentees in her classroom and we ALL got connected! It was a little crazy but it worked and now they feel more confident getting into Zoom on their own. Some of them had never used it before."

-Lisa Dutt
Cambridge, NE

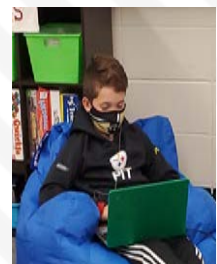
WHAT MATCHES ARE DOING:



This Fillmore Central match made beaded lanyards together.



Kearney coordinator, Deb Eickhoff, personally connected mentors and mentees on the Portal at school.



Glenwood, IA students found a relaxing way to communicate with their mentors through the Portal.

A LOOK AT OUR LOCAL PROGRAMS.

NEBRASKA

TeamMates expanded statewide in 1998. Right now, there are 143 chapters in Nebraska ranging from major metropolitan cities to small rural communities.



Minden event gives matches safe escape

The TeamMates of Minden chapter “escaped” the stress of the pandemic through their Annual TeamMates Night. Mentors and mentees worked together in 20-minute shifts to solve an Escape Room. The chapter used mobile trailers provided by a local Escape Room business.

Safety was key in the TeamMates event. Minden TeamMates Coordinator, Darcie Reed, said her school’s administration was passionate about giving mentors and mentees space to be there for one another.

“When I asked our administration if we would still be allowed to hold such an event during different times, our Athletic Director, Ed Rowse, said ‘Absolutely, the kids need this and need to have something to look forward to.’” Darcie said.

Darcie worked with the school’s nurse to make sure all matches were safe during the event. Hand sanitizer was readily available throughout the event with regular temperature checks, and every person wore a mask. Matches also ate in rotations with social distancing to help decrease the risk of COVID-19.

Support from Minden’s school administration has been key to the retention of matches. Darcie said she is so thankful to have a superintendent who is on board with the TeamMates mission.

“The support of our administration is incredible,” she explained. “Our superintendent knows the impact TeamMates Mentoring can make and felt we can do this safely this year.”

IOWA

TeamMates expanded into Iowa in 2004. TeamMates currently serves students in 22 Iowa communities, and plans to grow further into the state, specifically into Southwest Iowa with the help of a grant from the Charles E. Lakin Foundation.

Glenwood mentors show commitment to be there amid Pandemic

The restrictions following the COVID-19 pandemic haven’t kept mentors and mentees from continuing to meet in Glenwood, Iowa.

The program opened in 2019, just a few months before schools shut down and mentoring came to a halt. With close to 25 matches in tow, Glenwood’s coordinator, Sandra Dollen has worked to keep matches meeting.

“The pandemic has been difficult on some students, so having that one caring adult person has been very beneficial,” she explained. “Teenagers especially struggle to put their feelings into words, so I continually remind mentors ‘this isn’t about you’, it’s about the feelings of the mentee.”

Matches were able to meet in person during the Fall of 2020 by spending time outside. As the weather began to cool, Sandra said her mentors stayed committed as they worked to implement the TeamMates Portal.

“This year has been challenging at times, but we have stayed strong,” she explained. “When I think ‘Oh boy, how are we going to get through that,’ these mentors and mentees show me how!”

Glenwood’s matches will continue to meet in person outdoors or virtually during the Pandemic. Sandra is also making new matches to keep the program growing.

“I am blessed to see it unfold each and every day,” she said.



KANSAS

TeamMates expanded into Kansas in 2016. With the help of Greenbush Educational Service Center, TeamMates serves students in 10 Kansas communities.



Louisburg coordinators: 'This is why we do this.'

Matches in the TeamMates of Louisburg program reunited after about six months apart while staying socially distanced at their local school.

"The kids showed up that morning dressed up and eager to see their mentors after a long break," coordinator Lindsay Douglas said. "My thought during this event was 'this is why we do this.'"

Matches met on the school lawn and parking lot to follow CDC social distancing guidelines. Everyone wore masks, received a temperature check, and had access to hand sanitizer.

The TeamMates of Louisburg program began in 2019. They have 37 matches, and hope to continue to grow even in the midst of the pandemic.

"Mentors were just as excited as the mentees to reconnect," coordinator Sara McIntire said.

SOUTH DAKOTA

Custer-Hermosa was the first South Dakota school district to adopt TeamMates in 2018. Since then, TeamMates has expanded into 5 other South Dakota communities.



Sioux Falls pivots through first year amid COVID-19

TeamMates of Sioux Falls kicked off strong in January 2020 with 40 mentors trained and ready to begin match meetings in March.

Then, the world changed.

"My word for the year is 'PIVOT!'," said TeamMates of Sioux Falls Executive Director Lora Hayes.

Though those 40 matches weren't able to meet when schools shut down, Lora didn't let that stop the program's recruitment efforts in the Sioux Falls community. Program leaders continued to host mentoring lunch and learns with local businesses and virtual community club meetings. They were able to recruit an additional 40 mentors for students in Sioux Falls.

Now, the program is getting ready for matches to meet through the TeamMates Portal. Lora said she is hopeful to get mentees the support they need from an additional caring adult soon.

"We know once we get it started and community and schools see the success, it's sure to be widespread!"

WYOMING

TeamMates opened its first chapter in Wyoming in 2017. Since then, five other school districts have joined the team.

TeamMates partners with Craig Schroeder, Youth Engagement Project

As TeamMates continues to grow in rural Wyoming, a new project is underway to help students come back to their rural towns after high school or college graduation.

"Historically, the assumption is that young people don't want to live in their small town in the future," Craig Schroeder, Youth Engagement Project Coordinator, explained. "But actually, across about 50,000 young people in rural America, about half say they picture themselves building their future in their hometown if there were career, business, or agriculture opportunities."

How does this fit with TeamMates? Students will be exposed to those career, business, or agriculture opportunities by meeting with their TeamMates mentor in school once a week. The hope is that students will see that it is possible to start a life and career in a rural community, and eventually come home to play a major role in that community.

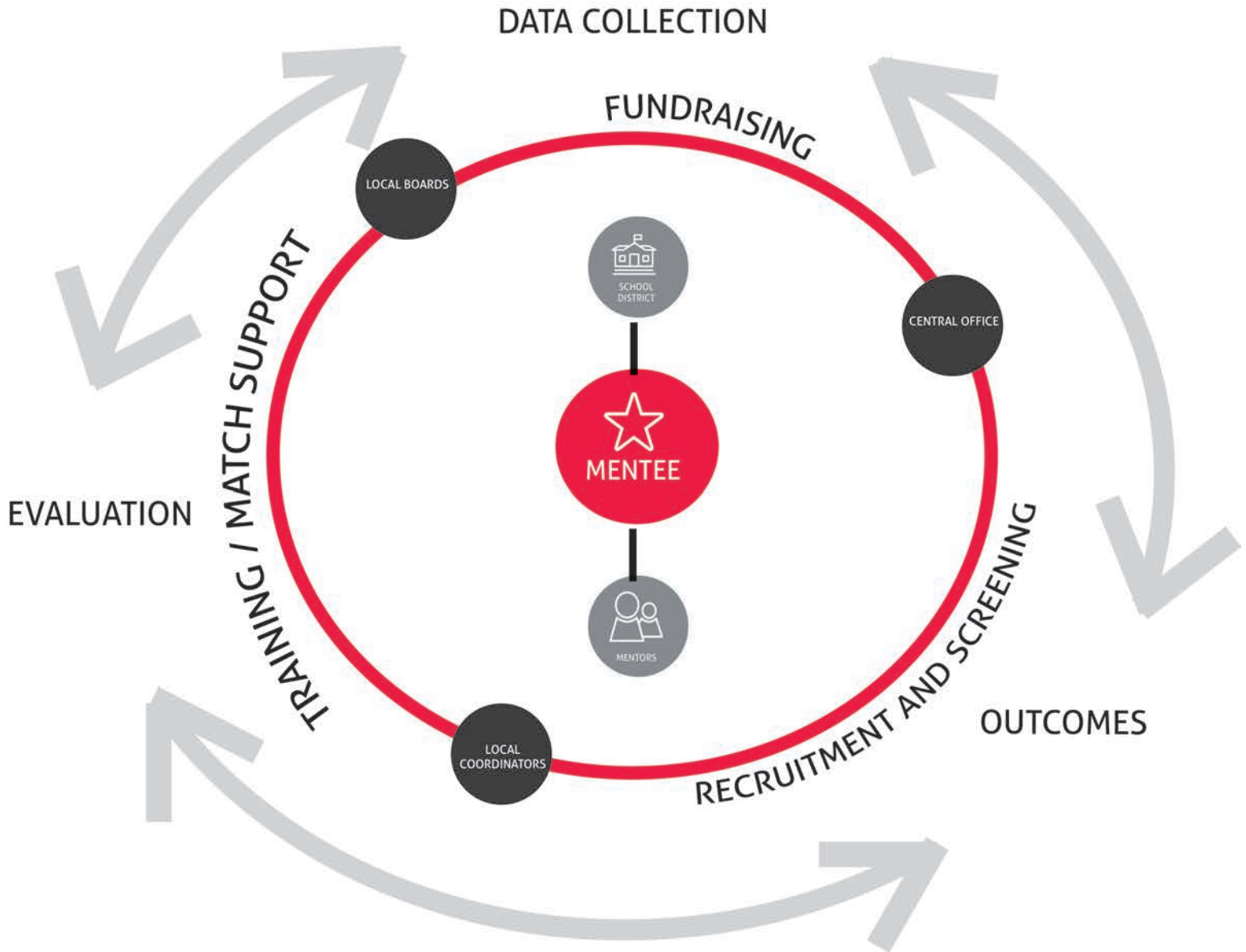
The plan is to work with seven communities in rural Wyoming to facilitate youth entrepreneurship and career exploration activities. The work begins with the Teen Opportunity Survey to assess the perspectives and priorities of young people regarding their career goals and future of their communities.

To read more about The Youth Engagement Project, go to [TeamMates.org](https://www.teammates.org).



WE PUT THE "TEAM" IN TEAMMATES.

TeamMates thrives through local partnerships. The TeamMates model illustrates the many stakeholders that are essential to help positively impact the world by inspiring youth to reach their full potential through mentoring.



Mentee

At the center of everything is the mentee. Everything we do in the TeamMates Mentoring Program revolves around what is best and safest for kids.

Mentors

TeamMates wouldn't be TeamMates without mentors. Our mentors make a difference by simply showing up. The TeamMates team works hard to find resources and offer learning opportunities so mentors can feel supported in their mentoring journey.

School District

As a school-based mentoring program, school districts are vital to the experience mentees receive. Chapters and local programs with strong school district support prove to have positive mentoring relationships.

Local Coordinators

Program Coordinators are the heart and soul of the TeamMates Mentoring Program. They represent their program to the world and wear that as a badge of honor. Our coordinators work diligently to support and match their mentors and mentees while acting as a liaison for their school district.

Local Boards

Each local program has a board to support the coordinator, mentors, and mentees. The local boards include community members, school leaders, and passionate mentors.

Central Office

The TeamMates Central Office provides screening, support and resources for all things TeamMates to local boards, coordinators, matches, donors, and potential supporters.

Data Collection

TeamMates annually gathers data from mentors, mentees and program coordinators to be used to measure program impact.

Evaluation

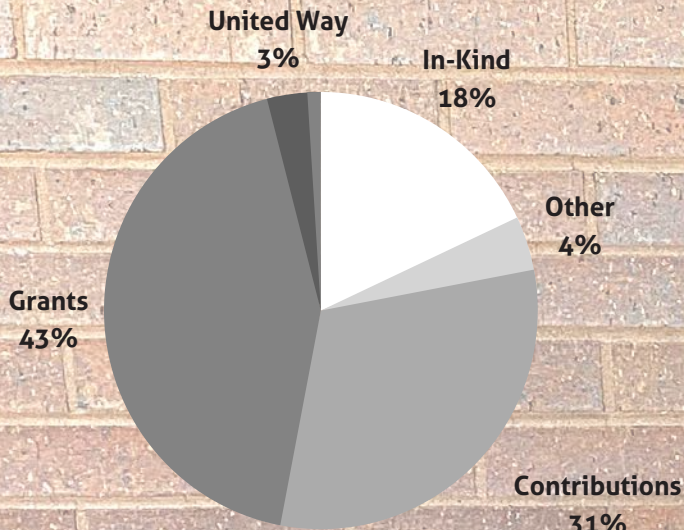
Program evaluation explores quality of match relationships, local program achievements and the impact of the match relationship on both mentor and mentee.

Outcomes

Program outcomes consistently show improvements in grades, attendance and behavior for mentees, which contribute to overall hope and engagement in school for mentees, resulting in greater likelihood of future success.

INVEST IN OUR IMPACT.

REVENUE SOURCES



OPERATING EXPENSES

Program	
\$4,874,235	86%
Management & General	
\$548,885	9%
Fundraising	
\$255,420	5%
Total	100%
\$5,678,540	

THE TEAMMATES FOUNDATION:

W.K. KELLOGG FOUNDATION PROVIDES GENEROUS GIFT TO HONOR TEAMMATES BOARD MEMBER



TeamMates is able to provide more mentors to children and financial assistance to college students after a generous gift from the W.K. Kellogg Foundation in honor of long-time board member Cynthia Milligan.

The Foundation gave a \$1 million contribution to the TeamMates Foundation in June 2020. Milligan retired from the W.K. Kellogg Foundation board earlier in the year. She was named as a trustee of that board in 1997 and is a past chair of the board.

The W.K. Kellogg Foundation, founded in 1930 as an independent, private foundation by breakfast cereal innovator and entrepreneur, Will Keith Kellogg, is among the largest philanthropic foundations in the United States. Guided by the belief that all children should have an equal opportunity to thrive, WKKF works with communities to create conditions for vulnerable children so they can realize their full potential in school, work, and life.

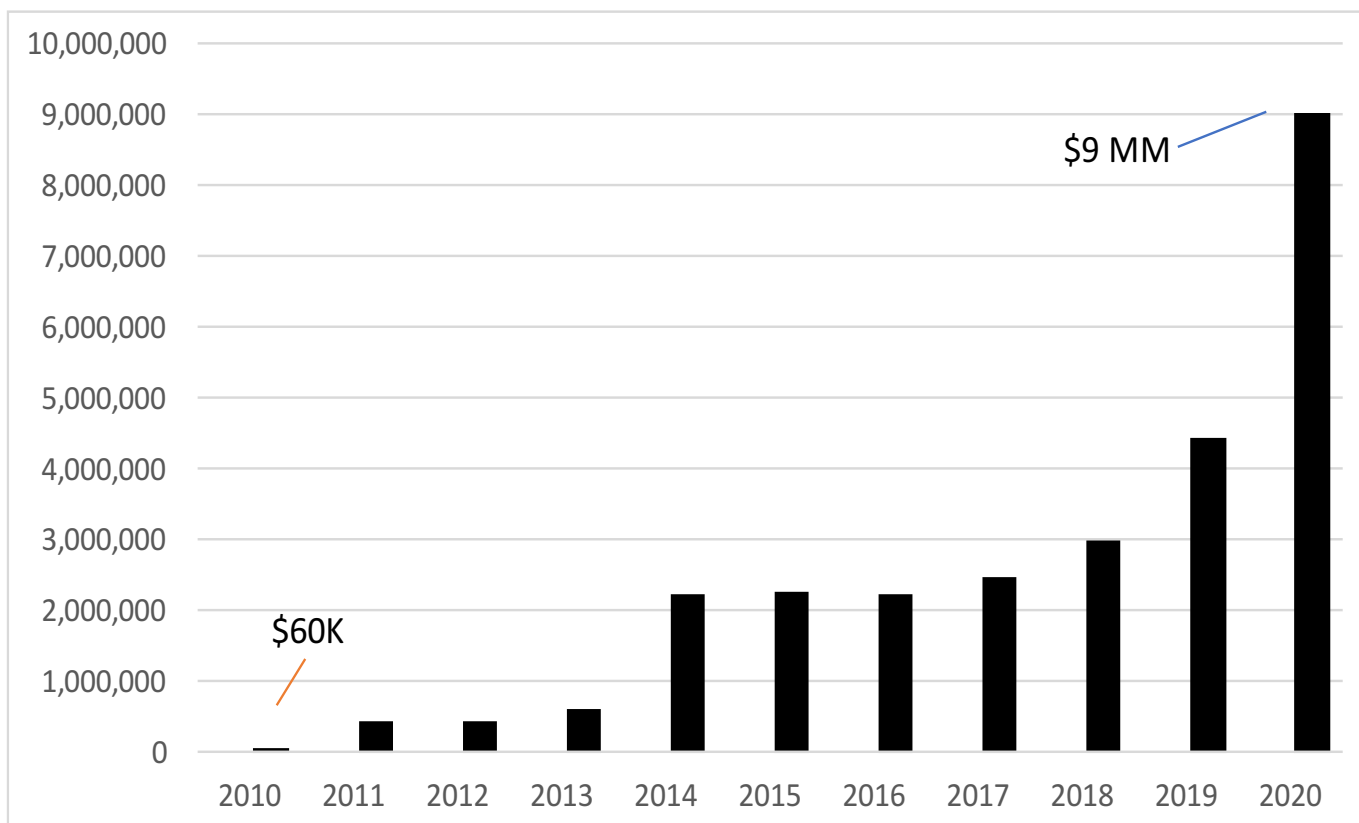
Milligan joined the TeamMates Program Board in 2014 and is also a member of the TeamMates Foundation Board.

"This is about seeing students succeed," she said. "We are very proud that over 95% of the young people in our program successfully graduate from high school."

Co-Founder of the TeamMates Mentoring Program, Tom Osborne, said this gift will make a major impact on the students who benefit from the program.

"The million-dollar contribution in Cynthia's honor is a significant investment in the future of TeamMates and the young people we serve," he said. "We are very grateful to Cynthia and the W.K. Kellogg Foundation for this very generous gift."

TeamMates Foundation Net Asset growth from 2011 through 2020



TEAMMATESSM

FOUNDATION

*Donors who have made commitments to the long-term sustainability of
TeamMates Mentoring Program and local chapters.*

Mr. Randy Aden
Ms. Denise Alderson
Mr. George E. Andrews II
Ms. Cynthia Arnold
Assurity Life Insurance Company
Bank of Doniphan
Mr. and Mrs. Eric Barber
Mr. and Mrs. Duane Bartelt
Dr. and Mrs. Charles D. Bauer
Mr. Greg Beach
Mr. Keith Bean
Ms. Amy Blomenberg
Ms. Allison Boulay
Mr. and Mrs. Jonathan G. Bradford
Mr. Jason Brisbin
Ms. Cori Brock
Mr. and Mrs. Shawn Buchanan
Mr. and Mrs. Eric Chandler
Mr. and Mrs. Rod Christensen
Mr. Steven Christophersen
Mr. Eric Clymer
Mr. Richard Cockerill
Ms. Juli Comstock
Mr. Dennis Cool
Ms. Anne Coulter
Ms. Heidi Cuca
Mr. Felix Davidson
Mr. Jeffrey Davis
Mr. Anthony Deitering
Mr. Kevin Demers
Ms. Liz Dieseth
Mr. and Mrs. Nelson Dolfuss
Mr. Dwight Dunsworth
Dutton-Lainson Company
Ms. Lori L. Erdman
Mr. and Mrs. Steve Erwin
Farmers Mutual Insurance Company of Nebraska
Linden Fornoff
Mr. and Mrs. Shane Frahm
Mr. Scott Frederickson
Mr. Brett Frevert
Mr. Brian Frevert
Mr. Wayne Gates
Ms. Brenda George
Goldenrod Companies, LLC
Mr. Dylan Goodman
Mr. and Mrs. Patrick J. Gorup
Ms. Marsha Graesser
Mr. Christopher Graham
Mr. Mike Grieb
Mr. and Mrs. Gregory Hackbart

Mr. and Mrs. Donald F. Hamilton
Mr. and Mrs. George E. Hasley
Mr. Scott Heitman
HF Group
Ms. Mary Higgins
Mr. and Mrs. Jason Hince
Mr. and Mrs. C.G. Kelly Holthus
Mr. Jonathan Howard
Mr. Paul Hussey
Ms. Barbara Jablonski
Ms. Barbara Jackson
Mr. Brandon Jacobsen
Chris Jacobson
Mr. Brian Johnson
Ms. Karen Jonas
Mr. Bryce Juedes
Ms. Patricia Kearns-Krumwiede
Mr. Richard W. Kelley
W. K. Kellogg Foundation
Kiewit Companies Foundation
The Kind World Foundation
Mr. and Mrs. Lynell W. Klassen
Mr. and Mrs. Arthur L. Knox
Mr. and Mrs. Craig Koehler
Mr. Paul Kolkman
Ms. Elizabeth Kroll
Ms. Monica Kruger
Lyman Larsen
Mr. Kent Lucken
Mr. Christopher Maher
Dr. Thomas Martin
Mr. John McGill
Dr. and Mrs. John D. McMillen
Ms. Marilyn Mecham
Mr. and Mrs. Matthew R. Mercer
Ms. Sara Meridith
Pat Meyer
Ms. Barbara Miller
Ms. Cathy Miller
Mr. and Mrs. Thomas Miller
Ms. and Mr. Sara Milnes
Ms. Christa Mittan
Mr. Jeff Moehn
Mr. Sean Moore
Mr. Thomas Mousel
Mr. and Mrs. Ben Muraskin
Mr. and Mrs. Scott Murray
Nebraska Team Beachbody Market Council
Mr. Daniel Neil
Mr. John M. Northrop
Mr. and Mrs. Gary L. Novotny

Mr. and Mrs. Justin Osborne
Dr. and Mrs. Tom Osborne
Mr. and Mrs. Doak Ostergard
Ms. Sarah Peed
Ms. Becky Perrett
Phi Kappa Theta UNL
Mr. and Mrs. Matt Pickens
Mr. and Mrs. James Pillen
Mr. and Mrs. David E. Potter
Mr. Curtis Rainge
Ms. Lori Richter
Mr. Scot Ringenberg
Mr. Randon Rohlfs
Mr. and Mrs. Joel Russell
Mr. James Sackett
Mr. Dan Scardina
Mr. and Mrs. Robert Scharf
Mrs. Kathy Schubauer
Mr. and Mrs. John Schuele
Mr. and Mrs. C. Edward Schwartz
Suzanne and Walter Scott Foundation
Slosburg Family Charitable Trust
Ms. Elizabeth Smith
Mr. and Mrs. H. Daniel Smith
Mr. and Mrs. Tom K. Sorley
Mr. Justin Spooner
Ms. Synthia Stark
Seline Family Foundation
Ms. Kara Stieneke
Mr. and Mrs. Greg Stine
Ms. Jenny Strako
Mrs. Jan Stuckey
Dr. and Mrs. Thomas Tegt
Mr. and Mrs. Kevin G. Terwey
Ms. Treva Thompson
Mr. and Mrs. Chad Tramp
Mr. Wesley True
Dr. and Mrs. Stanley M. Truhlsen
Ms. Jaynee Tyler
Ms. Michaela Valentin
Mr. Mervin Vanengen
Mr. and Mrs. Thomas D. Waldman
Mr. Thomas P. Walsh, Sr.
Mr. Christopher Walz
Mr. and Mrs. Jeffrey D. Warren
Ms. Christine Wendlandt
Mr. and Mrs. Michael J. Wilke
Mr. and Mrs. Robert Wilkinson
Mr. Nicholas Wilwerding

Osborne Legacy Society Fund Donors

*Donors who have made commitments to the long-term sustainability of
TeamMates Mentoring Program in their estate plans.*

Dr. Lois I. Johnson

Mr. and Mrs. Arthur L. Knox

Kim Meyer

Mr. and Mrs. Thomas Miller

Mr. John M. Northrop

Dr. and Mrs. Tom Osborne

Daniel R. Pestal Family Trust

Mr. and Mrs. Larry Schnase

Mr. and Mrs. John Schuele

Mr. Larry Sparks

Mr. and Mrs. Denny Walker

*To make a donation to the TeamMates Foundation or to include TeamMates in your estate plans, contact
Suzanne Hince at shince@teammates.org.*

Thank you for helping us be there for youth in your community!

TeamMates Mentoring is extremely grateful for our generous supporters. We would like to recognize the following donors who have contributed to our mission to make a difference in the lives of youth during the fiscal year July 1, 2019 thru June 30, 2020.

Legends Club **\$50,000 or more**

Anonymous
Mr. and Mrs. Richard Bell
Charles E. Lakin Foundation, Inc.
Moglia Family Foundation
Suzanne and Walter Scott Foundation
United Way of Lincoln and Lancaster County

All American Club **\$25,000 or more**

Dillon Foundation
Fremont Contract Carriers, Inc.
Mr. and Mrs. Scott A. Frost
Goldenrod Companies, LLC
Jet Linx Aviation LLC
Mutual of Omaha Foundation
Pillen Family Farms, Inc.
Pinnacle Bank Championship
Sandhills Global
Mr. and Mrs. Kenneth E. Stinson

Hall of Fame Club **\$10,000 or more**

The Ethel S. Abbott Charitable Foundation
Anonymous
Baxter Automotive Group
Because People Matter, Inc.
Mr. and Mrs. Craig P. Bohl
Rev. and Mrs. Gregory S. Bouvier
Bridges Investment Mgmt. Inc.
Cooper Foundation
Durham Family Foundation
Virgil Eihusen Foundation
Firespring Foundation
Mr. and Mrs. William D. Glaser
The Hawks Foundation
HDR, Inc.
Heider Family Foundation
Herman Foundation
Mr. and Mrs. Richard L. Jarvis
Kiewit Corporation
The Kind World Foundation
Lienemann Charitable Foundation, Inc.
Lincoln Financial Foundation, Inc.
Adah and Leon Millard Foundation
Monument Health Rapid City Hospital, Inc.
Mutual of Omaha Insurance Company
Nelnet Foundation
Mr. John M. Northrop
Dr. and Mrs. Tom Osborne
Pella Windows and Doors of Omaha and Lincoln
Pinnacle Bank
Walter M. Price Charitable Trust
Schmieding Foundation, Inc.
Mr. and Mrs. John Schuele
Lori and David Scott Foundation
William and Ruth Scott Family Foundation
Slosburg Family Charitable Trust
The TJX Foundation, Inc.
TMCO Inc.
Union Pacific Foundation
Norfolk Area United Way Inc.
United Way of the Midlands
US Bank Foundation
Valmont Industries, Inc.
Mr. Thomas P. Walsh, Sr.
Mr. and Mrs. Zachary A. Wiegert

Championship Club **\$5,000 or more**

Abel Foundation
The Allstate Giving Campaign
Ash Grove Charitable Foundation
BergankDV, LTD
Berkshire Hathaway Energy
Bleeding Red Productions, LLC
Mr. and Mrs. Dana C. Bradford IV
Chesterman Family Foundation
Mr. Adam Childs
City of Lincoln
Mr. and Mrs. Eric Clarke
Mr. and Mrs. Terrence S. Connealy

Cox Communications
CSG Systems, Inc.
Daniels Fund
Mr. and Mrs. Steve Erwin
Farmers Mutual Insurance Company of Nebraska
Mr. and Mrs. Don Fibich
May L. Flanagan Foundation, Inc.
FNBO
Mr. and Mrs. Shane Frahm
Mr. and Mrs. Brian Hamilton
Hampton Family Foundation
Hastings Community Foundation, Inc.
Mr. and Mrs. Gregory A. Heckman
Michael J. Delich and Denise E. Holter
Mr. and Mrs. Calvin R. Johnson
Kearney Area Community Foundation
The Kubly Family Foundation
Mr. and Mrs. Kevin C. Kugler
John and Elizabeth Lauritzen Foundation
Mr. and Mrs. Jason Licht
Lincoln Clean Energy
Lozier Foundation
Mr. Kent Lucken
Mariner Foundation Fund
Nebraska Furniture Mart
Nebraska Medicine
Nelnet, Inc.
Mr. and Mrs. John H. Nelson
Noddle Development Co.
Orion Advisor Solutions
Mr. and Mrs. Thomas J. Peed
Plymouth Fun Run
Quivey-Bay State Foundation
Raikes Foundation
Mr. and Mrs. Lee A. Sapp
Scheels - Rapid City
Scheels - Lincoln
Harley and Beth Schragger Foundation
Mark T. and Margaret L. Seacrest Family Charitable Foundation
Simmonds Family Foundation
Truck Center Companies
TSL Companies

Coaches Club **\$2,500 or more**

Advance Services, Inc.
Aksarben
Mr. and Mrs. Trev K. Alberts
Ali Holdings LLC
Paul J and Florence Moll Amen Memorial Fund
Ameritas
Mr. and Mrs. Mickey Anderson
Anonymous
Dr. James O. Armitage
Mr. and Mrs. Todd Balfour
Bay Family Foundation
Behlen Manufacturing Company
Bethany Lutheran Church
Better Business Bureau
Dr. and Mrs. Kenneth Bird
Bland Cares Foundation
Broadmoor Management
Buildertrend Solutions, Inc.
Catholic Health Initiatives
Centris Federal Credit Union
Client Resources, Inc.
Cline Williams Wright Johnson & Oldfather LLP
Mrs. Donnie Connealy
DuPont
Dvorak Law Group
Mr. and Mrs. Rex E. Ekwall
Fidelity Lodge No. 51
TeamMates of Fremont
Gallup
Mr. Bin Gao
Gavilon
Gothenburg United Fund, Inc.
Government Systems Software & Services, Inc.
Greater Kansas City Community Foundation
TeamMates of Gretna
Gretna Community Foundation
Hausmann Construction Inc.
Heritage Financial Services
Mr. and Mrs. Jason Hince
Hudl
Hunt Transportation

Mr. and Mrs. Dick Kelley
Koley Jessen, P.C.
Mr. and Mrs. Terry Kroeger
Kruse Financial
Kutak Rock LLP
Mrs. Mary S. Landen
Mr. and Mrs. Clarence L. Landen III
The Landen Foundation
Lincoln Financial Group
Lincoln Industries
Lutz & Company, PC
Mr. and Mrs. Nick J. Marquardt
Martis Capital
Mr. and Mrs. Matthew R. Mercer
Metropolitan Community College
TeamMates of Mind
Murphy Family Foundation
Mutual of Omaha Bank
Nelson, Van Denburg & Campbell Wealth Management Group, LLC
Nox-Crete Products Group, Inc.
Omaha Public Power District
Parker Family Foundation
Peace Lutheran Church
Mr. and Mrs. William Peel
Pfizer Foundation Matching Gifts Program
Physicians Mutual Insurance Company
Pony Express Chevrolet
Premier Bank
Prudential
RSM US LLP
Sam's Club Store #6413
Mr. and Mrs. Robert E. Schmieding
Security National Bank of Omaha
Mr. and Mrs. Steven W. Seline
Mr. Marc Shegoski
Sid Dillon Buick - Nissen - Hyundai
Snow-Redfern Memorial Foundation
Sterling Computers
Taska, Inc.
The LeRoy Thom, Jean Thom and T-L Foundation, Inc.
Timmerman Farms, Inc.
Mr. and Mrs. Robert A. Unger
Union Bank & Trust Company
United Methodist Church of Christ
US Bank
Verizon Media
Mr. and Mrs. Denny Walker
Warming Shelter, Inc.
Mr. and Mrs. Cory Wehrbein
Woodmen of the World Life Insurance Society
Mr. Ronald C. Yockey
York Ag Society
Mrs. Shirley A. Young
Mr. and Mrs. Richard E. Zadina

Players Club **\$1,000 or more**

96 Ranches, Inc.
Ace Hardware
Mr. and Mrs. DeMoine Adams
Mr. and Mrs. Jay E. Akins
Anonymous
Assurant
Bank of the Valley
Mr. and Mrs. Robert D. Bates
Mr. and Mrs. Tim Bebee
Black Hills Energy Services Co.
Mrs. Sara Boatman
Mr. Richard K. Bonness
Bunge Milling Inc.
Butler County Ambassadors
Cargill, Inc.
Central States Indemnity Company of Omaha
Chadron Medical Clinic
Mr. and Mrs. Steve Chambers
Bill and Marilyn Cintani Advised Fund
Mr. and Mrs. Timothy F. Clare
Creating Captains Inc.
Creative Planning Foundation
Crop Tech
Mr. Nicholas J. Cusick
Mr. and Mrs. Irv Dana III
Mr. and Mrs. Bruce Deines
Mr. Maurice Deines
Mr. and Mrs. August J. Dornbusch
Ms. Diane K. Duren and Mr. Drew R. Collier

Dundee Bank
E Energy Adams
Elkhorn Rural Public Power District
Mr. Michael H. Epstein
First-Plymouth Congregational Church
First State Bank
Flatwater Bank
Fraser Stryker PC LLO
Fremont Education Association
Frito-Lay
Mr. and Mrs. Russell Froehlich
Dr. and Dr. Deepak M. Gangahar
Mr. Colby E. Gauff
Good Life Counseling and Support, LLC
Mr. and Mrs. Craig Grams
Grant Thornton LLP
Mr. and Mrs. Ronnie D. Green
Ms. Denise Gunderson
H&H Auto Parts and H&H Axle Jet Powertrain
Harlan County Community Foundation
HBE Becker Meyer Love LLP
Mr. and Mrs. Adrian M. Hernandez
The Home Agency
In His Name
Investors Realty, Inc.
Mr. and Mrs. Lee Jacobsen
Mr. and Mrs. J. Mark Jensen
Mr. Ken Kaelin
Mr. Jon King
Mr. and Mrs. Ken W. Koop Jr.
Mr. and Mrs. John F. Kotouc
Mrs. JoAnne M. Krenk
Dan Kristensen Farm
Landmark Implement
Mr. Zane Languis
Le Mars Insurance Agency
Mr. and Mrs. Larry Lempka
Lockwood Development, Inc.
The Lund Company
Magnum Realty, Inc.
Mr. Joel P. Makovicka
Mr. and Mrs. Dale Martin
Dr. and Mrs. Jud Martin
Mr. Paul S. McKie
Mr. and Mrs. Greg McMillan
Mr. Steve Mendlik
Mercer
Moehn Electrical Sales Company
MPM Farrants
Nebraska Orthopedic Hospital
Nebraska Salt & Grain Company
Mr. and Mrs. Robert Niedbalski
NSG Transport, Inc.
Mr. and Mrs. Steven P. Ott
Papillion Area Lions Foundation
Patterson Harbor Marina
PayPal Your Cause
Pella Reformed Church
Mr. and Mrs. Ryan Pellett
Perkins County Community Foundation Fund
Phelps Memorial Health Center
Mr. and Mrs. Jerry L. Pont
QLI
Mr. Orv Qualsett
Reformed Church of Firth
Region V Systems
Roberts Electric
Mr. and Mrs. Anthony Schragger
Mr. and Mrs. John A. Selzer
Shelby County State Bank
The Shoemaker Family Foundation
Sid Dillon Chevrolet - Lincoln
Sid Dillon Chevrolet - Blair
SilverStone Group Incorporated
Mr. Bryan E. Slone
Southeast Nebraska Hematology & Oncology
Southwood Lutheran Church
Mr. and Mrs. Robin R. Stevens
Streck, Inc.
Sunrise Kiwanis
Mr. Donald Thayer
Thrivent
Tierpoint, LLC
Tri County PTO
United Way of South Central Nebraska
United Way of York

Wal-Mart - Betonville, AR
Wal-Mart - Lincoln
Mr. and Mrs. Richard L. Wampler
Werner Enterprises, Inc.
Wild Horse Golf Club
Ms. Addilyn Wilson
Mr. and Mrs. Ryan Windhorst
Woods Bros. Realty
Mr. and Mrs. Terry L. Zaback
Zerto Inc.

**Fan of TeamMates
\$250 or more**

21st Century Equipment, LLC
Ms. Elizabeth Abel and Mr. Mike Beacom
Mr. Norman Abele
Mr. Herbert L. Abrams
Mr. Tony Acone
Mr. Richard R. Agee
Agricultural Services, Inc.
AgWest Commodities, LLC
Mr. and Mrs. Matthew J. Aitken
Mr. and Mrs. Mitchell R. Alloway
American Family Insurance
Dr. and Mrs. Robert Anderson
Mr. and Mrs. Forrest P. Anderson, Jr.
Mr. Mitchell Anderson
Anonymous
Antelope County
Archer Cooperative Credit Union
Mr. Mark Askren
ASPM
Aurora Cooperative
Austin Insurance
Kelley Ayres and Lynda Ayres
Mr. and Mrs. Ritch A. Bahe
Ms. Shawna Baker
Balynor, Inc.
Mr. Randall Bartee
Ms. Beth Bartek
BBW Enterprises LLC
Ms. Kendra Beasley
Mr. and Mrs. Marc Behrens
Benes Service Company, Inc.
Mr. and Mrs. Michael L. Bennett
Mr. and Mrs. Timothy M. Benson
Mr. and Mrs. Richard Bergman
Berkshire Hathaway Energy Foundation
Bills Volume Sales, INC
Dr. and Mrs. Chris Birkestrand
Mr. and Mrs. Neal Blomenkamp
Bloomfield Booster
Mr. and Mrs. Dale Blum
Mr. Jay Bolding
Boldt Seed Account
Carrol and Darlene Booz Charitable Trust
Mr. and Mrs. Matt Boyd
Ms. Cori Brock
Ms. Charlotte Brotherson
Bryan Health
Bryan Medical Center
Mr. Alan Buckelew
Ms. Evonne Burkink
Ms. Luanne Burrows
Ms. Tiffany R. Buss
BVH Architecture
Mr. and Mrs. Tom Carson
Casey's General Stores
Mr. Mark Cassidy
Catlett Real Estate & INS LLC
Central City Mall
CFO Systems
Greater York Area Chamber of Commerce
Mr. and Mrs. Eric Chandler
Charities Aid Foundation of America
CHS Agri Services Center
Church of the Plains
Citizens Bank & Trust Co.
Citizens State Bank
Dr. and Mrs. Jeff Clarke
Mr. Thomas Colligan
Columbus United Federal Credit Union
Community Pharmacy Services, Inc.
Connealy Insurance
Ms. Christine J. Cook
Cooperative Producers, Inc.

Cornerstone Bank - York
Mr. Kevin Corwin
Ms. Carrie Cravens
Creative Expressions
Crete Foodmart/Subway
Dale's Food Pride
Mr. and Mrs. Bob Dalrymple
Mr. Jesse T. Damm
David City Discount Pharmacy
Ms. Lisa Davis
Mr. and Mrs. Richard Diers
Mr. and Mrs. Brad Dinkel
Dinkel Implement Co.
DNA Production, LLC
Mr. and Mrs. Alan H. Domina
Ms. Chris Duntz
E Creamery LLC
Fraternal Order of Eagles - York
Mr. and Mrs. William S. Eastwood
Mr. and Mrs. James A. Eckhardt
Edward Jones
Elkhorn Valley Bank
Norfolk Elks Lodge #653
Mr. and Mrs. Brock Emery
Mr. and Mrs. Patrick J. Engelbert
Mr. and Mrs. Kenton Exstrom
F&M Bank
Mr. Scott Fecht
Mr. and Mrs. Michael Feilmeier
Mr. and Mrs. Matthew Fennema
Ferguson Signs, Inc.
First Bank and Trust
First Community Bank
First United Methodist Church
Mr. Del Fischer
Five Points Bank of Hastings
Mr. and Mrs. Dwight Freiberg
Ms. Sara Friedrichsen
Mr. and Mrs. Steven F. Fritson
Frost Media Group LLC
Ms. Lisa Gamble
Ms. Mariana Garcia
Gary Thompson Agency, Inc.
Mr. and Mrs. Wayne Gates
Mr. Wade Geiken
Gene's Auto and Truck Service
Ms. Samantha Giese
Gifts & Things
Ms. Jessica Gill
Ms. Genee E. Godden
Ms. Janet Goodman
Gothenburg Feed Products
Gothenburg Realty
Mr. Jeff Graham
Mr. and Mrs. Joel Grams
Great Plains Communications, Inc.
Great Western Bank
Greater Omaha Sports Committee, Inc.
Green Plains Central City LLC
Gregg Remodeling, LLC
Mr. and Mrs. Lee Grove
Mr. and Mrs. Gregory Hackbart
Mr. and Mrs. Alan Hackerott
Russel Hallberg
Ms. Renee A. Halsey
Mr. and Mrs. Roger J. Hames
Mr. Doug Hammer
Shannon Hannappel
Ms. Rebecca Hansen
Mr. William Hansmire
Ms. Lori Hasselquist
Hastings Vision Clinic, P.C.
Ms. Nancy Hecht
Todd and Mary Heistand Family Foundation
Ms. Jennifer L. Hempel
Ms. Kristen R. Hermansen-Ryan, D.D.S.
Ms. Melissa Hicks
Mr. Michael V. Hinrichs
Mr. and Mrs. Matthew Hodges
Ms. Jenna Hoffman
Holdrege Area Chamber of Commerce
Mr. and Mrs. Doug Hollister
Home Federal Bank
Mr. and Mrs. Dan Huebner
Image Total Fitness
Ink Alley Screenprint & Design

INVenergy Wind Development North America, LLC
Mr. and Mrs. Verlin Janssen
Meighan McCarthy Johansen Hope Fund
Ms. Robin Johnson
Mr. and Mrs. Aaron Johnson
Ms. Tammy Johnson
Ms. Vicky Johnson
Mr. and Mrs. Gregg Jones
Ms. Cassandra Joseph
Mr. and Mrs. Tad L. Joyce
Mr. and Mrs. Johnie Kamery
Mr. and Mrs. Kevin Kaup
Mr. and Mrs. Con M. Keating
Kelley Bean Company
Mr. and Mrs. Chad T. Kelsay
Fremont Kiwanis Club
Mr. and Mrs. Mark Klabunde
Mr. Brian Klintworth
Mr. and Mrs. Craig Koehler
Mr. and Mrs. Nicholas Kroon
Krull Agency of Minden, Inc.
Mr. and Mrs. William M. Kubly
Mr. and Mrs. Marcus Kuhl
Kwik Stop
L & P Brown Farms, Inc
Ms. Char Lafle
Ms. Heather Lander
LandMark Implement
Mr. and Mrs. Bill Larsen
Mr. Rod Larsen
Mr. Al Larson
Mr. Brad Larson
League of Nebraska Municipalities
Mr. and Mrs. Cory Libis
Livingston Enterprises, Inc.
Mama's Pizza La Vista
Terry and Billie Mann
Ms. Michelle Marsh
Mary Lanning Healthcare
Mr. and Mrs. Michael Mathews
McCarthy Capital
Mr. and Mrs. Michael McCarthy
Mr. Kenneth McCartney
Ms. Jennifer McCord
Ms. Amy McKay
Mr. Ronald R. McKeever
Mr. and Mrs. Shann McKeever
Mr. and Mrs. Dennis McMahan
Ms. Sara Meridith
Merrick Foundation
Mesner Development Co.
Elizabeth E. Meyer - Estate
Midlands Community Foundation
Mr. and Mrs. John Miller
Minden Exchange Bank & Trust Company
Carey and Jeff Mogensen
Ms. Mandi Monson
Mrs. James H. Moore Jr.
Moravec Financial Advisors
Mr. Glen Moss
Mr. Matt Mullen
Mr. and Mrs. Shawn Murdock
Dr. and Mrs. James P. Murphy
Ms. Kayla Murphy
Naturally Recycled Proteins
Ms. Deborah Neary
Nebraska Community Foundation
Nebraska State Bank & Trust Company - Broken Bow
Nebraska State Bank & Trust Company - Callaway
Ms. Gwendolyn T. Newkirk
Ms. Teresa J. Nieveen
Ms. Maddie Nitsch
NMC
Ms. Anna C. Nolan
Norfolk Implement, Inc.
Northeast Eye Care
Northeast Nebraska Public Power
Northwest Bank
Noshsense LLC
Oak Creek Sporting Club
Mr. and Mrs. Alexander O'Dell
Ogallala Rotary
Mr. Dan O'Holleran
Mr. and Mrs. Steve Olson
Ms. Jeanette Orduno
Mr. Hector Ortiz
Mr. Richard E. Osburn
Mr. and Mrs. Tod Oschner
Mr. and Mrs. Douglas K. Ostergard

Mr. Rob Owen
Oxford Thrift Store
Mr. Dan Papik
Papillion Tire, Inc.
Mr. and Mrs. Ronald D. Patrick
Mr. Jason Pauling
Ms. Kristi Pelican
Pella Womens Ministries
Mr. and Mrs. Tyler Petersen
Ms. Audra Peterson
Dr. Cassandra and Mr. Gary Pietrok
Mr. and Mrs. Michael Pinquoch
PML Construction
Mr. Jerry Pope
Post #11 Junior Legion Baseball
Preferred Popcorn
Mr. Patrick Raimondo
The Rathert Foundation
Mr. and Mrs. William Reay
Reiser Insurance Welath Management
Rich and Sons Camper Sales, Inc. of Grand Island
Ms. Ashley Richmond
Mr. and Mrs. Richard Rodgers
Rosenberg Insurance
Rose's Transportation
Rotary Club of Omaha - Suburban
RU Nuts, Inc.
Ms. Barbara Ruser
Mr. James Ryba
Ms. Jackie Sampson
Mr. Cary L. Sandell
Sandman Family Foundation
Lee Sapp Enterprises
Satori Capital
Mr. and Mrs. Daniel Schaecher
Mr. and Mrs. Fred W. Schellpeper Jr.
Mr. and Mrs. Neal Schlautman
Ms. Cindy K. Schmid
Mr. and Mrs. Ralph E. Schnell
Brenna Sears
Mr. and Mrs. Matthew Shada
Shell Oil Company Foundation Matching Gifts Program
Sidelines Bar and Grille
Ms. Rebecca L. Simerly
Siouxland Community Foundation
Mr. and Mrs. Robert G. Smallfoot
Ms. Jill Smith
Mr. Joshua Smith
Mr. Kenny Soejoto
Erin Sotello
Southern Heights Presbyterian Church
Jerry Spady Chevrolet GMC Cadillac
Ms. Laura M. Sparks
Ms. Earleen Spitsnogle
Square, Inc.
St. Boniface Catholic Church
Mr. and Mrs. Sam Stadler
Mr. Justin Stark
Mr. and Mrs. Bruce C. Stedronsky
Mr. Gary Steiner
Stonacek Funeral Home
C A Story Foundation
Subway - Norfolk
Ms. Laura Sulzbach
Mr. and Mrs. Craig Sundberg
Sutton Electric, Inc.
Mr. and Mrs. Gene Svec
Mr. and Mrs. Rick Teel
Mr. and Mrs. PJ Theisen
Bill and Julia Thomas Charitable Trust
Mr. Dave Thompson
Thriftway Market
Ms. Tami Timmerman
Mr. and Mrs. Mark Tramontina
Mr. Peter R. Uhing
United Way of Western Nebraska
V.F.W. Post 6256
Van Kirk Sand & Gravel
Mr. Tony M. Veland
Viaero Wireless
Vishay Intertechnology, Inc.
Mr. Michael Vocasek
Mr. and Mrs. Tony Vondrak
Waffles-N-More
Mr. Gene Wagner
Wakefield Community Club
Wakefield Farms
Mr. and Mrs. Thomas D. Waldman
Wal-mart - McCook

Estate of Robert D. Weber
Ms. Marlene Wehrbein
Evan Welch
Wells Fargo - Hastings
Mr. Mark T. Werth
Ms. Lacie Westcott
Wetzel & Truex Jewelers, Inc.
White Castle Roofing
Whye's Choice Fundraising
Kiley Wiechman
Mr. Thomas Wilkinson
Mr. Steven Willey
Mr. and Mrs. Timothy Williams
Wimmer's Meat Products
Mr. Donald Wolf
Mr. Ralph F. Woodard
Ms. Kara Youngworth
Mr. and Mrs. Robert Zaback
Mr. and Mrs. Bartholomew J. Zediker

Gifts In Kind

14 Karat
Ace Hardware - David City
Ace Hardware - Gretna
Dede Adams
Mr. and Mrs. DeMoine Adams
Mr. and Mrs. Jay E. Akins
Mr. and Mrs. Richard J. Akins
Mr. and Mrs. Robert T. Akins
Mr. and Mrs. Mitchell R. Alloway
American Legion Post 170
Anant Enterprises
Anthony's Steakhouse
Anytime Tees
AquaTrec
Carly Arnett
Mr. and Mrs. Robert Arnett
Arrow Building Center
Artesa Vineyard Winery
Athleta Village Pointe
Atlas Medstaff
Backyard Playworld
Bad Sportz
Ms. Barb Bailey
Ms. Bethany Banister
Barley's Bar and Grill
Ms. Heather Barry
Ms. Elizabeth Abel and Mr. Mike Beacom
Beaumont Entertainment
Mr. and Mrs. Chad Beckius
Ms. Kristin Benjamin
Mr. and Mrs. Timothy M. Benson
Better Business Bureau
Ms. Amy Beyer
Beyourself Boutique
Big Bats LLC
Bloom
Bloomworks
Mr. and Mrs. Dale Blum
Blur Parties
Ms. Nancy Bodenhamer
Dr. and Mrs. Charles Boettcher
Mr. and Mrs. Steve Borer
Borsheim's Fine Jewelry and Gifts
Breslow Knothole Group
Mr. Eddie Brown
Mr. and Mrs. Kristopher C. Brown
The Buckle, Inc.
Buffalo Wild Wings
Butler County Health Care Center
Card My Yard
Stacy Carder
Cardinal Elementary
Mr. and Mrs. Brian Carlson
Mr. and Mrs. Jason Carnahan
Mr. and Mrs. Tom Carson
Central Athletics Cheer & Tumbling
Chadron Booster Club
Chadron Chamber of Commerce
Chadron State College Athletic Department
Mr. and Mrs. Eric Chandler
Ms. Gretchen Chace
Chick-Fil-A
Chief Buildings
Chieftain Distribution
Mr. Adam Childs
Mr. Joe Chitwood
Chocolate Peacock

Coca-Cola Enterprises, Inc.
Code Ninjas
Collective Goods
College View
Ms. Sarah Colvin
Mr. and Mrs. Terry Comstock
Consumer Service Company
Core Fitness
Costco
Country Catering
Mr. Tom Coviello
Covington Elementary
Covington Links
Creighton University
Crites, Shaffer, Connealy & Watson PC, LLO Attorneys-at-law
Mr. and Mrs. Steve Crooks
The Cut Hut
Dakota City Elementary
Mr. and Mrs. Brad DaMoude
Ms. Kathy DaMoude
David City High School - Staff Philanthropy Fund
Ms. Jane Davis
Deer Run Golf Course
Deets Home Store
Mr. and Mrs. Chad Denker
Dismal River Club
Ms. Stephanie Dorr
Ms. Shanna Duggan
Ms. Shelly Dunbar
Dundee Bank
Durham Museum
Dusted Charm
E.N. Swett Elementary
Eagle Chevrolet
Mr. and Mrs. James A. Eckhardt
eCreamery
Ely Farms
Ms. Cynthia Elliott
Ms. Linda Elliott
Entrap Games
Erickson Mowing
Figure by Faith
Firespring
Five Points Bank of Hastings
Flagship Restaurant Group
Mr. and Mrs. Shane Frahm
Ms. Marci Frame
Mr. and Mrs. Robert F. Frels
Frost Media Group LLC
Funny Bone
Randy Gant
Gary Michael's Clothiers
Gary Thompson Agency, Inc.
Gayelen Kunzie
Gillette Printing
Mr. and Mrs. Daryl R. Glodowski
Mr. Adam Gonshorowski
Mr. Harold Grandy
Mr. and Mrs. Dale Griess
Mr. and Mrs. Bruce Grubb
Mr. Justin Haag
Mr. and Mrs. Don Haase
Mrs. Mary Hall
Mr. and Mrs. Dean Hampton
Handlebend
Ms. Jennifer Hanna
Harney Elementary
Mr. Judd Hawkins
Mr. and Mrs. Howard L. Hawks
HBE Becker Meyer Love LLP
Heartland Properties
Henry Doorly Zoo/Omaha Zoo Foundation
Mr. David Herbster
Mr. and Mrs. Adrian M. Hernandez
Ms. Cathy Hiatt
Hobby Town USA
Ms. Arlene Hofmann
Hohenstein Construction
Ms. Deborah Hollenbeek
Holiday Inn Express & Suites
Home Haven
The Home Hunters Group, PLC
Ms. Marsha Horkey
Ms. Andrea Hsu
Mr. and Mrs. Craig D. Hundt, Sr.
Husker Auto Group
Husker Sports Properties
Ms. Sue Hutchinson
Hyatt Place

Industrial-Irrigation Services
Infinite Loop VR
Initials, Inc
Jackson Services, Inc.
Ms. Lori Jacobs
Mr. and Mrs. Richard Jacobsen
Jeff's Riverside Car Wash
Sandy Jones
Brett Julius
Mr. Johnie Kamery and Ms. Buffi Kamery
Ms. Glenda Kasper
Jay Kathol
Kawasaki
Ms. Ila Kendall
Mr. and Mrs. David Kennedy
Kittid
Mr. and Mrs. Mark Klabunde
Mrs. and Mr. Mistyn Kozisek
Mr. Roland Kramer
Terry Kriz
Mr. Cody Krull
Ms. Cherilyn Kuhl
Ms. Tara Ledbetter
Legend Buttes Golf Course
Lewis and Clark Elementary
Robyn Lieber
Little Hawk Yarns
The Loft by Belle Touche'
LPL'S Restaurant & Pub
Luciano's North
Lucky Bucket
MacDaro's
Madsen Seeds
Mane Street Hair
Marathon Press
The Mark
Marriott
Mary Lanning HealthCare Foundation
Material Girl
Ms. Genevieve Martinez
Maverik
Maya & Mave
Coy McConnell
Mr. and Mrs. Morris McConnell
Mr. and Mrs. Brian McInerney
Meadow Grove Fire Department
Mr. and Mrs. Donald Miller
Ms. Kara Morgan
Mr. and Mrs. Justin Morris
Ms. Brandi Myers
NAI/NP Dodge Commercial
Ms. Annie Neal
Nebraska Crossing Outlets
Mrs. Karen Nelson
Stacy Nelson
Ms. Leslie Neujahr
New Leaf
Ms. Amy Newton
Niemann Enterprises Inc.
Northeast Community College
Nothing Bundt Cakes
Oakland Golf Club
Office Furniture Installers, Inc.
Oldaker Outfitting
Omaha Childrens Museum
Omaha Culinary Tours
Omaha Lancers Hockey Foundation
Omaha Sport Properties
Omaha Steaks
Omaha Symphony
Omaha World-Herald
Opera Omaha
Orange Theory Fitness
Oregon Trails Golf Course
Oriental Trading Company, Inc.
Mr. Kyle Osborne
Oscar Carl Vinyard
OTB Arizona, LLC
Outlaw Printers
P J Electric
Palmer Candy
Ms. Connie Palmerton
Pampered Pooch
Patriot Equipment/Minden Machine
Peppermill Restaurant & Lounge
Ms. Michelle Pernicek
Ms. Audra Peterson
Mr. and Mrs. Connor Peterson
Peterson Drug

Staci Petit
Pickens Consulting
Pat Pinion
Pinnacle Bank
Pinnacle Bank Championship
Post Playhouse
Prairie Creek Vineyard
Prim Beauty Parlour
Quick Mailing Service, Inc.
Reboot Roasting
Mr. and Mrs. William Reay
Reve Salon
The Ridge
Ridgeview Golf Course
Mr. and Mrs. Matt Ritterbush
River's Edge Golf Course
Dana Robinson and Jeremy Robinson
Mr. Rich Rolofson
Mr. and Mrs. Greg Romshek
The Rose Theater
Runza - Chadron
Runza - Gothenburg
Runza National
Samantha Bartels Aesthetics
Savvy Salon
Mrs. Kathy Schubauer
Scooter's Coffee
Sears
Shredly
Ms. Kami Simonson
Sioux City Explorers Baseball
Skin Specialists P.C.
Skydive Atlas
Ms. Patricia A. Slaughter
Mr. and Mrs. Nic Smith
South Sioux City High School Baseball Team
Southridge Golf Course
Southwest Airlines
Speakeasy Steakhouse
Spillway Bar & Grille
SSC Boys Basketball
Stadler Implement, Inc.
Starbucks
Mr. and Mrs. Lance Steffen
Mr. and Mrs. Jeff Steinbeck
Mr. and Mrs. Brent Stewart
Stokes
Mr. and Mrs. Steve Stouffer
Mr. Todd Streeter
Ms. Marni Stusse
Subway
Ms. Liz Swartz
The Tassel
Telesis Holdings
Mr. and Mrs. Kevin G. Terwey
Mr. and Mrs. Justin Thompson
Thrivent Financial
Mr. and Mrs. Mark Tramontina
Triple B Printing Company
TSL Companies
Tubing and Adventures
Tucker Glass
Mr. and Mrs. Gerald Uhing
Mr. and Mrs. Scott Ulmer
Union Bank & Trust Company
United Sports Academy
UNK Athletics Department
US Bank
Mr. and Mrs. Jim Verschoor
Levy Voehl
Mr. Ryan Vondrak
Mr. and Mrs. Tony Vondrak
Wahlstrom Ford
Ms. Jennifer Wallage
Wal-Mart - Chadron
Wal-Mart - Papillion
Mrs. Kit Watson
Ms. Donna Wempen
Werner Enterprises, Inc.
Wildlife Encounters
Ms. Erin Williams
Ms. Becky Winder
Winner's Circle
Francis Wilson
Ms. Jenny Wood
Xpress Mart
YMCA
Ms. Kara Youngworth

Gifts In Memory of:

John P. Ayers

Ms. Amber Ayers

Dee Bartek

Mr. Dan Bartek

Ms. Amy Blubaugh

Mr. Aaron Carnell

Mr. and Mrs. Shawn B. Linehan

Ms. Kristine A. Smith

Ms. Sheila Tapscott

Mr. and Mrs. Thomas D. Waldman

Jose Becerra

Mr. and Mrs. Kevin G. Terwey

Annette Beers

Mr. Dan Bartek

Tom Boatman

Mrs. Sara Boatman

Alan Brecht

Mr. and Mrs. Stephen W. Lewis

Mr. Dallas Nau

Mr. Russell Smith

Nancy Catchpool

Kris Green

Dorothy "Cookie" Confer

Ms. Amy Lipins

Peg Deines

Prudential

Gerald "Gerry" G. Gray

Ms. Lori L. Erdman

Marilyn Jean Hendrickson

Mr. and Mrs. Jason Hince

Mr. and Mrs. Jack N. Jensen

Lockwood Development, Inc.

Mr. David C. Max

Harold McKeever

Mr. and Mrs. Shann McKeever

Michele Northrop

Mr. and Mrs. Nelson Dolfuss

Shirley and Chuck Reed

Deb Reed

Jan Rickertsen

96 Ranches, Inc.

Mr. and Mrs. Mitchell Becker

Mr. and Mrs. Tom Boyd

Mr. and Mrs. Richard Buckingham

Ms. Peggy Buettner

Teri Rundle

Ms. Carla Hedstrom

Teresa Russell

Mr. and Mrs. David Bartling

Ms. Elaine Campbell

Joy and Val Carlson

Ms. Sheila Cheleen

Mr. and Mrs. Galen Clark

Gibson Hereford Ranch

Ms. Gwen Jessen

Faunei Johnson

Mr. and Mrs. William Keck

Ms. Terri Lacrete

Mr. and Mrs. Gerry Maucher

Mr. and Mrs. Steven Mayo

Mr. and Mrs. Byron McCormick

Mr. and Mrs. Kenneth Russell

Mr. and Mrs. Larry Rutt

Ms. Jennifer Townsend

Van Newkirk Herefords

Ms. Kathleen Vowers

Mr. and Mrs. Merlin Zoucha

Diane Ryan

Mr. and Mrs. Thomas Albertsen

Mr. and Mrs. Charles B. Brown

Mr. and Mrs. Robert E. Burk

Mr. and Mrs. Michael Culver

Mr. Dan F. Guinan

Mr. and Mrs. Edward W. Lueninghoener

Mrs. Harriet E. Maser

Mr. and Mrs. Michael S. Meredith

Mr. Rob A. Randels

Francis M. Ryan

Mr. and Mrs. Brian J. Trude

Mr. and Mrs. Larry R. Wendlandt

Dee C. Zanders

Gary Scharf

Mr. and Mrs. Robert Scharf

Alfred Schuele

Mr. and Mrs. Tod Oschner

Robert S Spinharney

Mr. Mike Spinharney

Steven Startzer

Mr. Maurice Deines

Ms. Patricia Heidecker

Mr. and Mrs. Dennis Kramer

Kipp Lansing Waymire

Ms. Kim Van Brunt

Robert D. Weber

Estate of Robert D. Weber

Duane Wendelin

Mr. Dana Wendelin

Mr. and Mrs. Jerry Wendelin

Mrs. Ruth Wendelin

Mr. and Mrs. Tom Wendelin

Keith Williams

Carol Drvol

Ardyce Zaback

Mr. and Mrs. Alan Anderson

Mr. and Mrs. Bruce A. Brown

Marlyce R. Brown Revocable Trust

Mr. and Mrs. Ed Hensley

Mr. and Mrs. Gregg Jones

Mr. and Mrs. Larry G. Kochen

Ms. Sarah Smith

Mr. Gary Steiner

Mr. and Mrs. Kevin Svec

Mr. and Mrs. Scott Vosika

Mr. and Mrs. Larry Zaback

Mr. and Mrs. Robert Zaback

Gifts In Honor of:

Steve and B.J. Anderson

Mr. Mitchell Anderson

Awesome OPS Mentees

Ms. Jessica Curtis

Kara Baird

Ms. Patty O'Connor

Chuck Bauer

Mr. John M. Northrop

Christmas Donation in Name of Randall and Kathy Graham

Jeff Graham

Cloie

Ms. Barbara Ruser

Robert and Marlene Colligan

Mr. Thomas Colligan

Chad Cook

Satori Capital

Jim Ellis

Mr. Tim Harrison

Isaac Favinger

Ms. Laura Fritson

Roger Folkers

Mr. Eric Kauffman

Mr. Bob Rose

Kevin Gade

Lincoln First Realty

John Gottschalk

Mr. and Mrs. Denny Walker

Buddy Herzog, OPS Graduate

Ms. Barbara E. Greenwald

Stephanie Kinsey

Ms. Shawna Baker

Jane McVay

Ms. Anna McVay

Mentor, Tyler Schroeder and Other Wonderful Team of Leaders

Mr. and Mrs. Dwayne Mabry

Loy and Matt Olson

Luise and Lynn Berner

Tom Osborne

Mr. and Mrs. Richard Rodgers

Dave and Carolin Roehr

Ms. Cathy Miller

Addison Stugart

Mr. and Mrs. Joseph L. Souder

Marsha Sukup

Ms. Kara Baird

Jan and Ernie Thayer

Mr. Donald Thayer

Ted Tietjen

Ms. Cheryl Saiki

Denny Walker

Mr. Don Chase

Mr. Gerald Frick

Denny Walker's Support to this Organization and his

Nebraska Spirit

Mr. William Hansmire

Anna Young

Mr. and Mrs. Tod Oschner

TEAMMATESSM

MENTORING

PROGRAM BOARD OF DIRECTORS

Chairman

Steve Kiene

Vice Chairman

Deepak Gangahar

Treasurer

Tony Urban

Secretary

Steve Erwin

Executive Director

Sarah Waldman

Nick Cusick

Mike Flood

Mark Graff

Kyle Hanson

Cynthia Milligan

John Northrop

Lisa Olson

Tom Osborne

Chad Tramp

Tony Veland

Zach Wiegert

FOUNDATION BOARD OF DIRECTORS

President

Jim Pillen

Treasurer

John Schuele

Secretary

Denny Walker

Executive Director

Suzanne Hince

Steve Kiene

Cynthia Milligan

John Northrop

Tom Osborne

Thomas Smith

Chad Tramp

Tony Urban

Zach Wiegert

CENTRAL OFFICE TEAM

Executive Director

Sarah Waldman

Chief Financial Officer

Louise Pickens

Development Director

Carla Patton-Ochsner

Program Director

Beth Roberts

Support Service Director

Jen Benson

Program Manager

Janae Solomon

Screening and Risk Manager

Kelly Koehler

Training and Match Support Manager

Allyson Horne

Development Coordinator

Taylor Carlberg

HR Coordinator

Gayle Norris

Recruitment Coordinator

Hannah Miller

Regional Coordinator

Jess Karim

Sue Kennedy

Keith Leckron

Michael McCambridge

Emily Thomas

Annette Woodhead

Jay Wright

Research Coordinator

Tess Starman

Senior Accountant

Brenda Henderson

Staff Accountant

Scott Miller

TeamMates+ Coordinator

Jaci McKeever

Administrative Assistant

Tricia Dix

Screening Specialist

Shaley Albrecht

Vicky Howick

Training and Match Support Specialist

Anna Young



TeamMates Mentoring Program
11615 Centennial Rd. #200
La Vista, NE 68128
402-390-8326
TeamMates.org



HOW CAN I SUPPORT TEAMMATES?



BECOME A MENTOR

Mentors and mentees meet once a week in school or virtually during the day.

A MENTOR IS:

- **An Advocate**
- **A Promise Keeper**
- **A Safe, Adult Friend**
- **Empathetic**
- **Non-Judgemental**

If this sounds like you, go to TeamMates.org to fill out our online application.



MAKE A DONATION

Contribute to the TeamMates General Fund or Foundation. Your gift will help recruit and support matches.

TO DONATE:

Go to TeamMates.org or mail a check to:

Gayle Norris
6801 "O" Street
Lincoln, NE 68510

Please contact Carla Patton-Ochsner at cpatton-ochsner@teammates.org with questions.



BECOME A FRIEND OF TEAMMATES

Get involved by becoming a strong partner.

- Set up a mentor recruitment event at your workplace.
- Share your knowledge in a Match Academy Session
- Provide in-kind expertise in areas like printing, technology and video production.
- Host a TeamMates meeting in your office or conference space.

Please contact Hannah Miller at hannah@teammates.org to get involved.